

Tuba

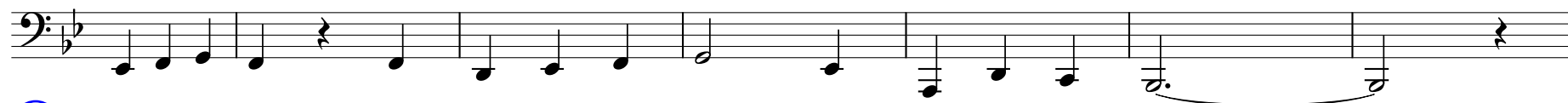
Cal Band Audition Music

Select and play one of Etudes 1, 2, or 3.
Select and play one of Etudes 4 or 5.
Play Big C
Note the tempos, key signatures, and all musical instructions on the page.

① ♩ = 88



10



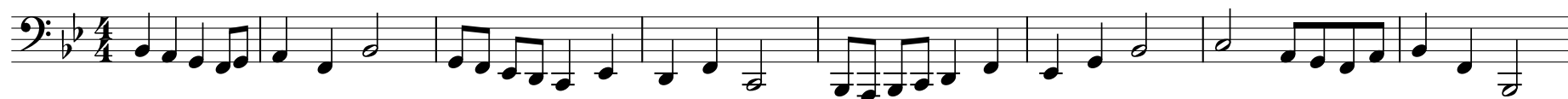
② ♩ = 88



10



③ ♩ = 100



9

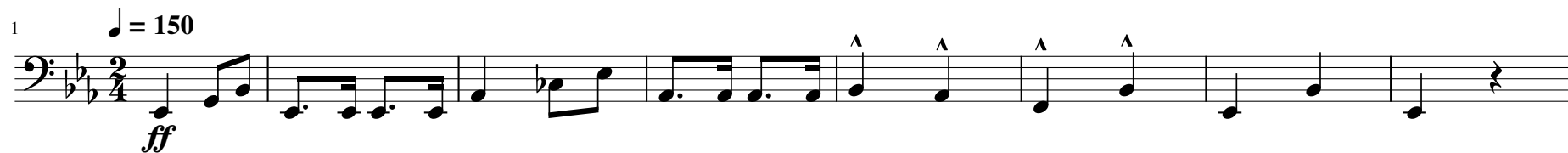


Tuba

Big C

Music by Harold P. Williams
Lyrics by N. Loyall McLaren
arr. Robert O. Briggs

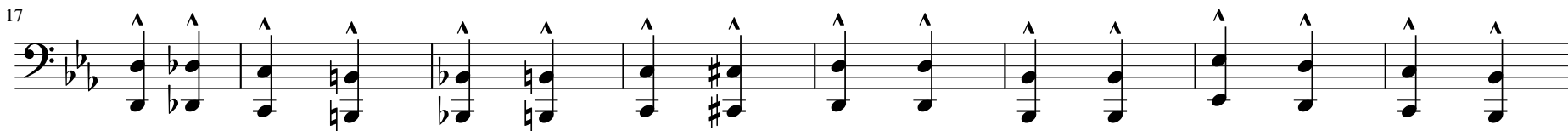
1 $\text{♩} = 150$
ff



9



17



25



33 Fine

